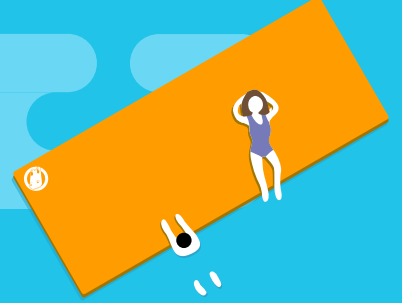


Croc-Pad OWNER'S MANUAL



USING YOUR CROC-PAD

This product is to be used for non-commercial water recreation with proper adult supervision. This is not intended as a flotation device. It is recommended that all users wear a suitable life jacket or personal flotation device (PFD) before entering the water. Users of this product assume all risk of injury.

The safe location for use of your CROC-PAD is in sufficiently deep water, away from boat traffic and clear of obstructions, such as piers, docks, rocks, sandbars, etc. After you find the ideal location to place your CROC-PAD, attach the leash directly to an anchor or mooring to keep it from drifting away. If you plan to leave it in the water for an extended period of time during the day, you should attach a buoy or marking flag. It is not intended for use on land or in swimming pools.

USING YOUR CROC-PAD

- Your CROC-PAD is not a toy that is designed to be pulled or towed behind a boat or personal watercraft and as such does not have any braking or steering devices. Towing it is dangerous and could cause damage to the foam.
- Common sense should dictate the number of persons allowed on the CROC-PAD at one time.
- Never allow a child to use the CROC-PAD without supervision.
- The CROC-PAD is not a lifesaving device. Do not leave children unattended while in use. Use only under competent adult supervision. Only to be used in water in which the child is within its depth and under adult supervision.
- Do not swim or play under the CROC-PAD and do not dive from the CROC-PAD.
- Do not jump from other objects onto the CROC-PAD.
- Never use the CROC-PAD if you are under the influence of alcohol or drugs. Do not attempt to swim from the mat to another object or the shore if you are fatigued.
- Never use the CROC-PAD during storms where lightning is present, before sunrise, or after dark.
- Inspect the CROC-PAD, tethers, cords and anchors for wear or

defects before every use.

- If the mat is anchored, precautions should be taken to eliminate activities that could cause entanglement in the tether leash or anchor rope.

CARE AND MAINTENANCE

The CROC-PAD is made from cross-linked polyethylene foam and does not require any other flotation device or air, so set up and maintenance are simple. Use a sponge to wipe off any foreign material or debris that could scuff or damage the surface. UV rays are damaging to the surface and could cause fading and hazing of the surface if left in sunlight for weeks at a time. To prolong the life and appearance of your CROC-PAD, keep it dry and protected from sunlight and the elements when not in use.

WARRANTY

Your CROC-PAD comes with a one-year warranty as set forth below and is given by croc-pad.com. In respect to product purchased and used in Australia. CROC-PAD products, when delivered to you in a new condition in original container, are warranted against defects in material or workmanship for one year from date of purchase so long as the product remains the possession of the original owner. Defective product(s) returned to croc-pad.com and proven to be defective upon inspection, will be repaired or exchanged for a new product where applicable. The warranty period for any replacement product shall be consistent with the terms set forth of the original One Year Warranty.

When returning any product under this One Year Warranty, you must first contact office@croc-pad.com to obtain return authorization. The product must be packaged securely with a copy of the invoice or bill of sale, together with a complete description of the defect. Shipping charges, if any, will be prepaid by the customer. Products covered by this One Year Warranty will be returned to you without charge by croc-pad.com.

This One Year Warranty covers only manufacturing defects and does not apply in the following cases:

- Loss or damage to the product due to abuse; mishandling; alteration; accident; failure to follow maintenance or storage instructions; or any acts of God, including storm or animal damage.
- Loss or damage to the product from towing or incorrect tethering.
- Surface snags, scuffs & tears from sharp objects, including metal objects, nails, claws, swim suit ornamentation, jewellery, other water toys, etc.
- Wear and tear from normal use and weathering, including weathering from UV light.

This One Year Warranty shall not extend to anyone other than the original purchaser of the product.

No implied warranty, INCLUDING THE IMPLIED WARRANTY OF MERCHANTABILITY, or fitness for a particular purpose, applies to the product after the applicable period of express warranty stated above. No other express warranty, except as mentioned above, given by any person, firm, dealer or corporation with respect to your CROC-PAD shall bind croc-pad.com.

[Croc-pad.com](http://croc-pad.com) will not be liable for loss of revenue or profit, failure to realize savings or other benefits, or for any other special, incidental or consequential damages caused by the use, misuse or inability to use the product regardless of the legal theory on which the claim is based, and even if croc-pad.com, has been advised of the possibility of such damages. Nor shall recovery of any kind against croc-pad.com be greater in amount than the purchase price of the product sold by croc-pad.com. Without limiting the foregoing, you and any user of your CROC-PAD, assumes any and all risks and liability for loss, damage or injury to you, your property, and to others and their property arising out of the use, misuse, or inability to use any product sold by croc-pad.com, not caused directly by the negligence of croc-pad.com. This One Year Warranty gives you specific legal rights, and you may have other rights which may vary by state. Should you have any questions, please contact us by email at office@croc-pad.com, or via our website www.croc-pad.com.